

# MONTHLY MEMBERSHIP PROGRESS REPORT

LOCATION AUSTRALIA

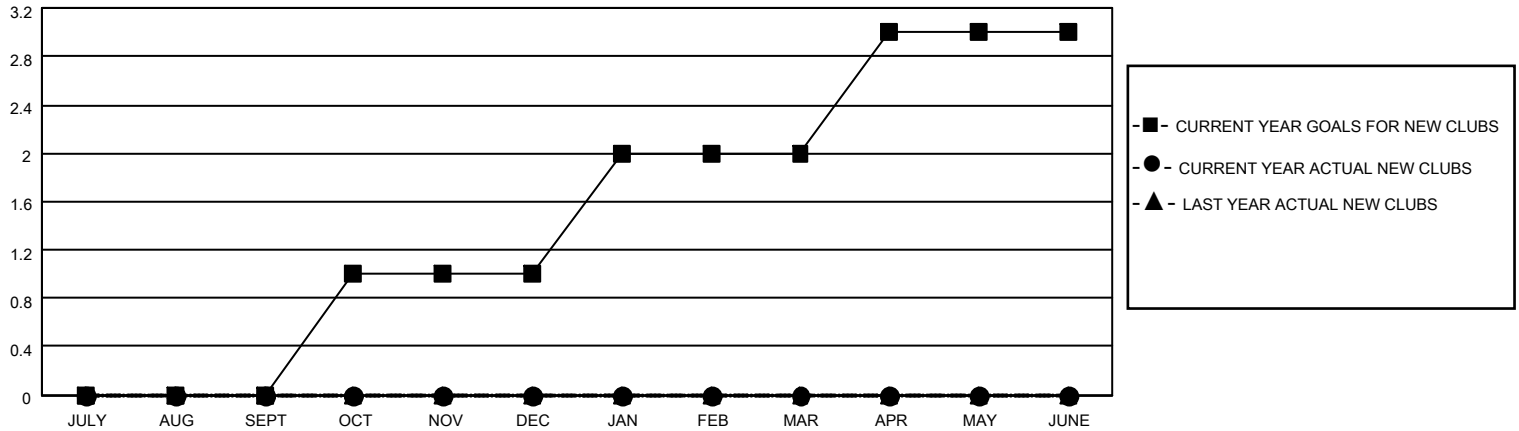
District 201Q2

Results as of: 6/30/2023

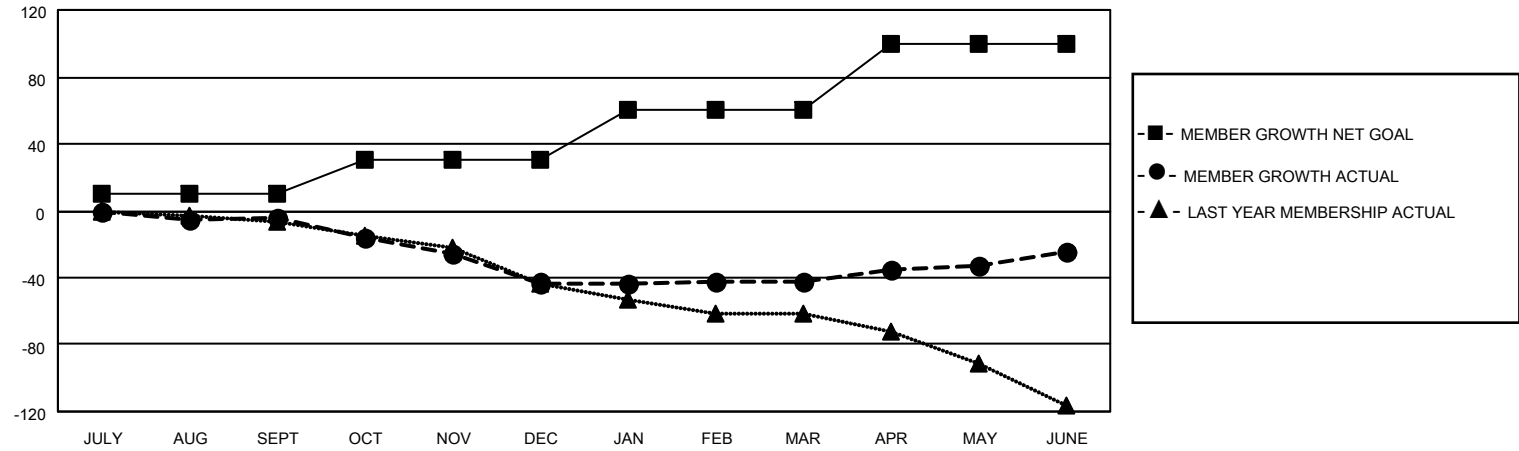
Clubs			
RESULTS FOR 2022-2023			
QUARTER	NEW CLUB GOAL	NEW CLUBS	DROPPED CLUBS
JULY/AUG/SEPT	0	0	0
OCT/NOV/DEC	1	0	2
JAN/FEB/MAR	1	0	0
APR/MAY/JUNE	1	0	0

Members			
RESULTS FOR 2022-2023			
QUARTER	MEMBER GROWTH NET GOAL	MEMBER GROWTH ACTUAL	DROPPED MEMBERS ACTUAL (including transfers)
JULY/AUG/SEPT	10	31	31
OCT/NOV/DEC	20	30	55
JAN/FEB/MAR	30	32	30
APR/MAY/JUNE	40	53	28

**GOALS AND ACTUAL NEW CLUBS CUMULATIVE**



**GOALS AND ACTUAL MEMBERS CUMULATIVE**



**DROPPED CLUBS: 2**

**35 CLUBS OF 64 ADDED 1 OR MORE NEW MEMBERS**

**GENDER DISTRIBUTION**

MALE	540 (53.73%)
FEMALE	465 (46.27%)
NON BINARY	0 (0.00%)
PREFER NOT TO ANSWER	0 (0.00%)

**DROPPED MEMBERS**

[CLICK HERE FOR CUMULATIVE MEMBERSHIP DATA](#)

DECEASED	16
CLUB CANCELLED	0
OTHER	128
<b>TOTAL</b>	<b>144</b>

TOTAL FAMILY UNIT MEMBERS 166

FAMILY MEMBERS PAYING HALF DUES 84